



---

**Note:** You must copy the self-extracting Win95Driver.exe file from the Win95 directory on the CD provided to a directory on your hard drive and extract the files **before** inserting your client adapter.

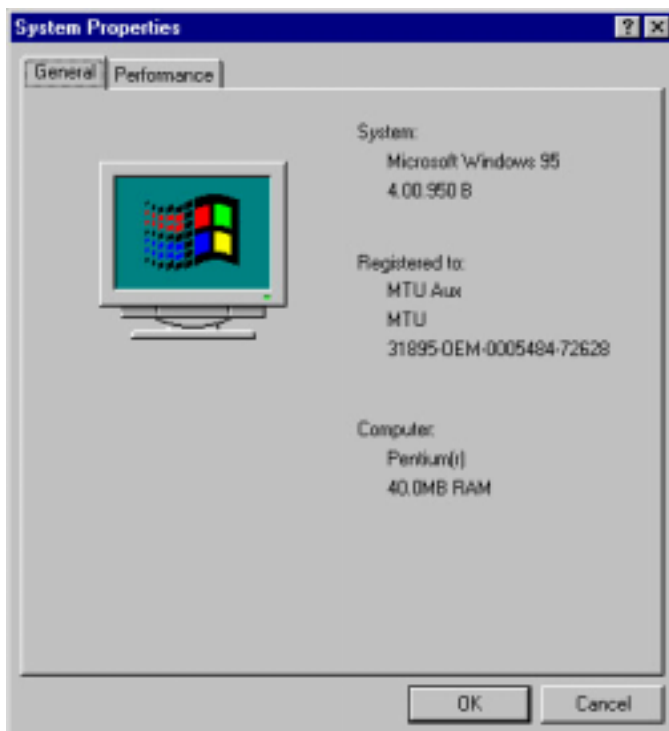
---

**Note:** If a Cisco Aironet client adapter was previously installed on your computer with the 6.10 driver, you must remove this driver before you can insert your new client adapter and install its more recent driver.

---

### 1. Installing the appropriate driver

- The driver installation instructions vary for Windows 95 Version A and Version B. You can determine which version is running by right clicking on **My Computer**, then clicking on **Properties**. The version is located under the **System** heading. For example, if you have Version B, the version number ends in the letter **B**. Please be aware that these instructions are for systems running Windows 95 **B**.



---

**Note:** Windows 95 limits your computer's network connections to four. If you try to install a client adapter when four network devices (such as a PCMCIA Ethernet card, dial-up adapter, VPN adapter, docking station Ethernet card, etc.) are already connected to your computer, the new adapter cannot establish a network connection.

---

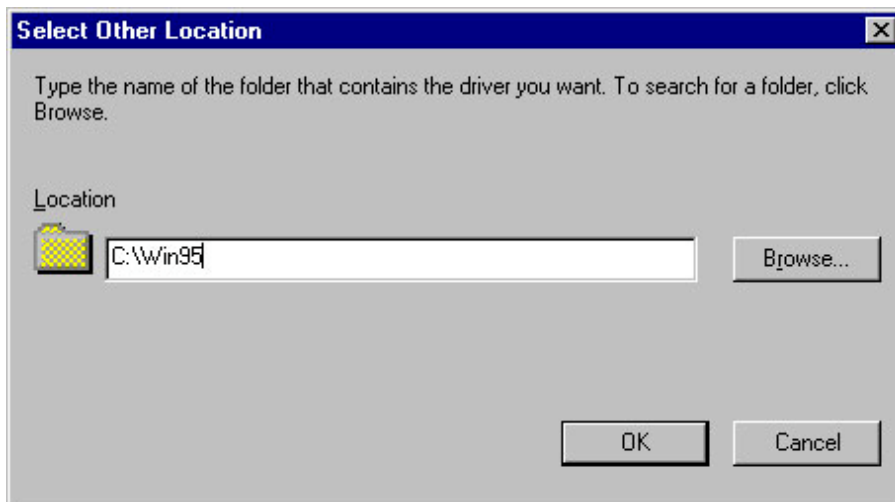
- a.) Insert the Cisco Aironet Series Wireless LAN Adapters CD into your computer's CD-ROM drive.
- b.) Copy the **Win95Driver.exe** file from the Win95 directory on the CD to a directory (other than the root Windows directory) on your computer's hard drive.
- c.) Extract **Win95Driver.exe** by double clicking on it. Make sure you know where the files are being extracted, you will need to know their location later. (**DO NOT** extract the files to the root directory of your hard drive. Windows 95 is unable to read them from this location. Extract to an easy to remember directory, for example C:\Win95).
- d.) Remove the CD from your computer's CD-ROM drive. Restart your computer.
- e.) While the computer restarts, hold the PC card with the Cisco logo facing up and insert it into the PC slot, applying just enough pressure to make sure the card is fully seated. **Caution:** Never force the PC card into the PC slot. Forcing it will damage both the card and the slot. If the PC card does not insert easily, remove the card and re-insert it.
- f.) After you insert the client adapter into your computing device, Windows automatically detects it and briefly opens the **New Hardware Found** window.
- g.) The **Update Device Driver Wizard** dialog box opens and indicates that Windows will complete the installation of the client adapter. Click **Next**.



- h.) When the **Update Device Driver Wizard** indicates that Windows was unable to locate a driver for the client adapter, click **Other Locations**.



- i.) In the **Select Other Locations** window, enter the path to the location where you extracted the Windows 95 driver files. You must enter the entire path (for example, C:\Win95). Click **OK**.



j.) When the **update Device Driver Wizard** indicates that it has found the driver, click **Finish**.



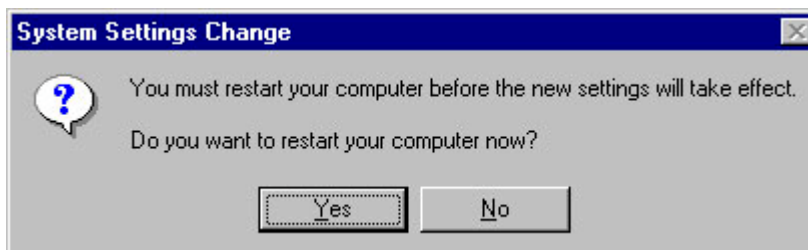
k.) When the **Insert Disk** window appears prompting you to insert the Aironet Wireless LAN Adapter Installation Disk, click **OK**.

l.) If a window appears indicating that the pcx500.sys file could not be found, enter the same path that you entered in step i.

m.) If you are prompted to insert the Windows 95 operating system disk, click **OK** and do one of the following:

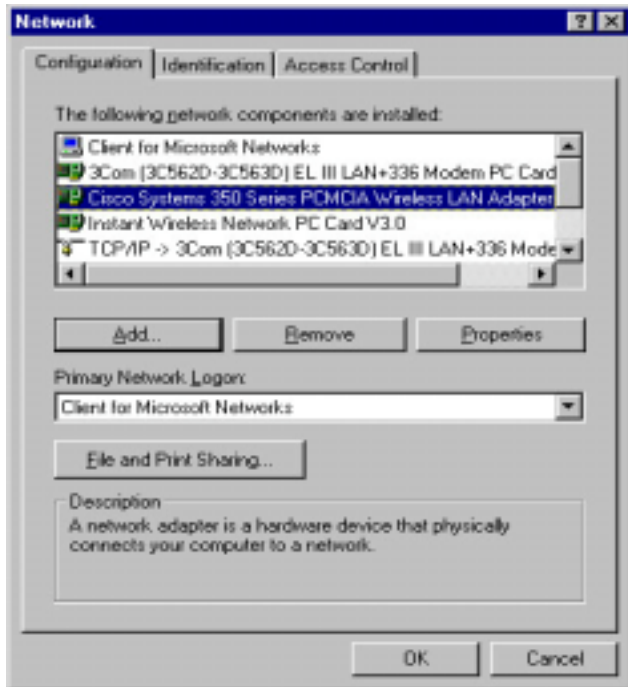
- If the Windows 95 operating system files are installed on your computer, they are usually located in the C:\windows\options\cabs folder. Type **C:\Windows\Options\Cabs** in the Copy files from dialog box. Click **OK** to copy the required files.
- If Windows 95 prompts for the Windows 95 operating system CD, insert this CD into your CD-ROM drive. If your CD-ROM drive is D, the path in the dialog box should be **D:\Win95**. Click **OK** to copy the required files.

n.) When prompted to restart your computer, remove any disks and click **Yes**.

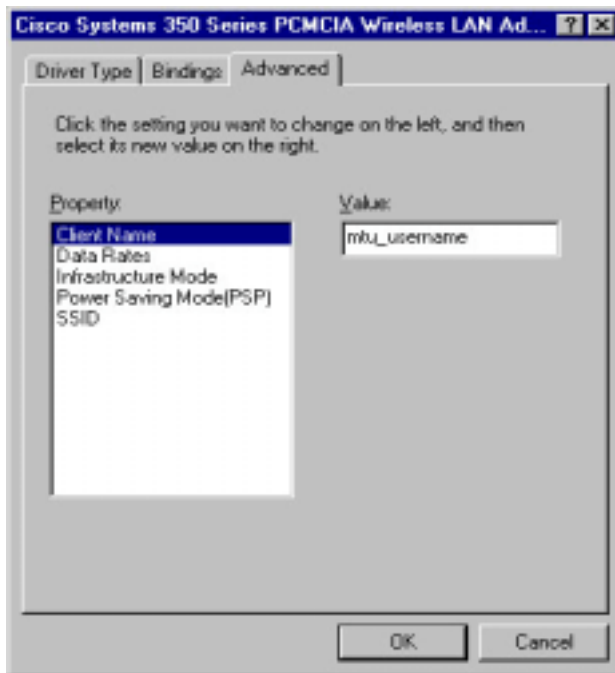


## 2. Configuring your client adapter

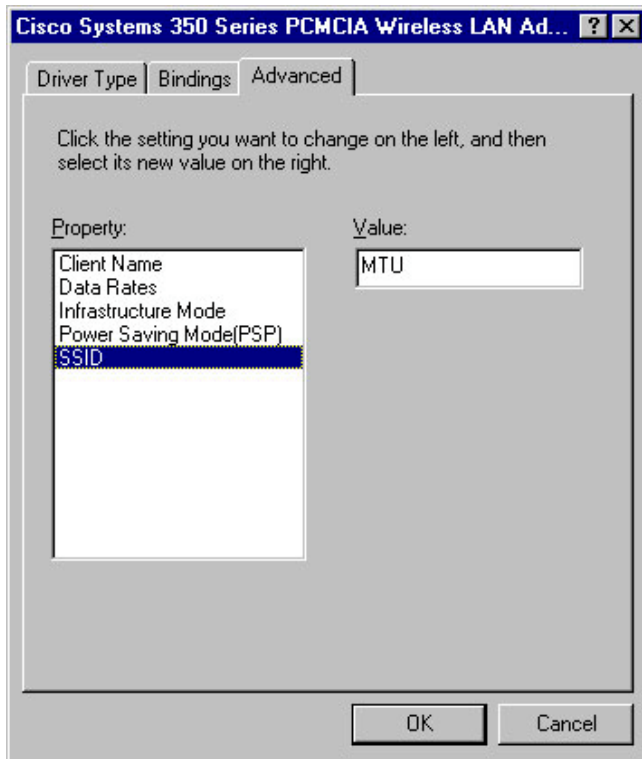
a.) When the computer restarts, double click **My Computer**, **Control Panel**, and **Network**.



b.) Select the Cisco Systems wireless LAN adapter and click **Properties**. In the client adapter Properties window, click the **Advanced** tab. Select **Client Name**. Type your MTU username in the Value dialog box.

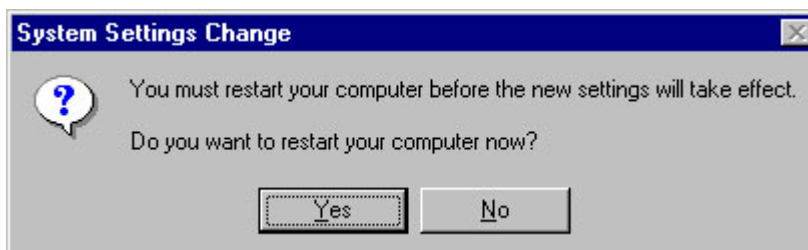


c.) Select **SSID**. Type **MTU** (case-sensitive) SSID in the Value dialog box. Click **OK**.



d.) In the **Network** window, click **OK**.

e.) When prompted to restart your computer, click **Yes**.



**Congratulations, the hardware installation is complete. Your Wireless Network PC Card is set up and ready for use.**

### 3. Accessing RoverNet

- a.) Open any SSL capable browser and type any valid web address. The gateway will redirect you to login.



- b.) Enter your **Campus Username** (email address) and your **Campus Password** (if you do not know what your Campus Password is, you can obtain it by bringing your student ID card into the Tech Express Office, located in Rm. 100 of the Memorial Union Building). Press **Login**.



- c.) If you have subscribed to this service a small window will appear to keep your connection open. **Keep this open to enable automatic renewal.** It is ok to minimize.



- d.) You will then be redirected to the website you originally typed in.