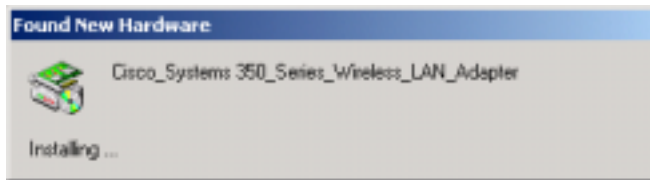




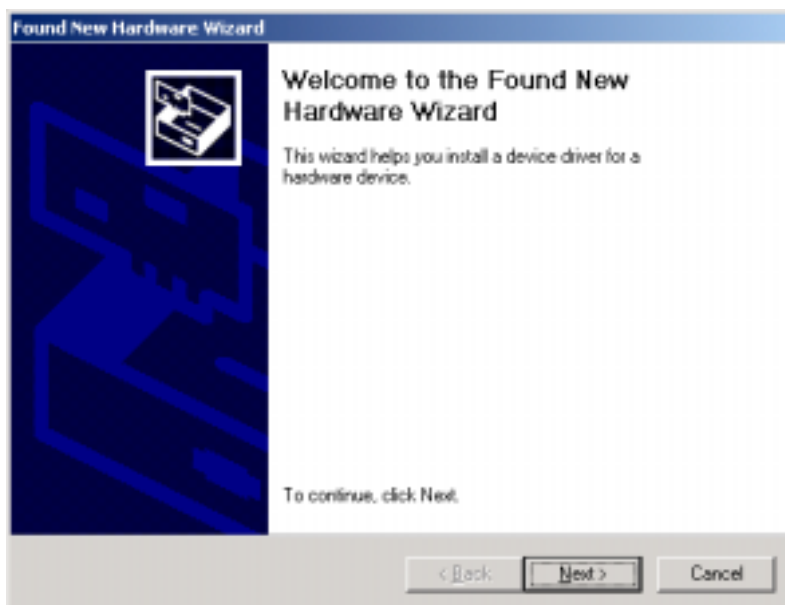
Note: If a Cisco Aironet client adapter was previously installed on your computer with the 6.10 driver, you must remove this driver before you can insert your new client adapter and install its more recent driver.

1. Insert the PC Card Client Adapter

- a.) While the computer is on, hold the PC card with the Cisco logo facing up and insert it into the PC slot, applying just enough pressure to make sure the card is fully seated. **Caution:** Never force the PC card into the PC slot. Forcing it will damage both the card and the slot. If the PC card does not insert easily, remove the card and re-insert it.
- b.) After you insert the client adapter into your computing device, Windows automatically detects it and briefly opens the **New Hardware Found** window.



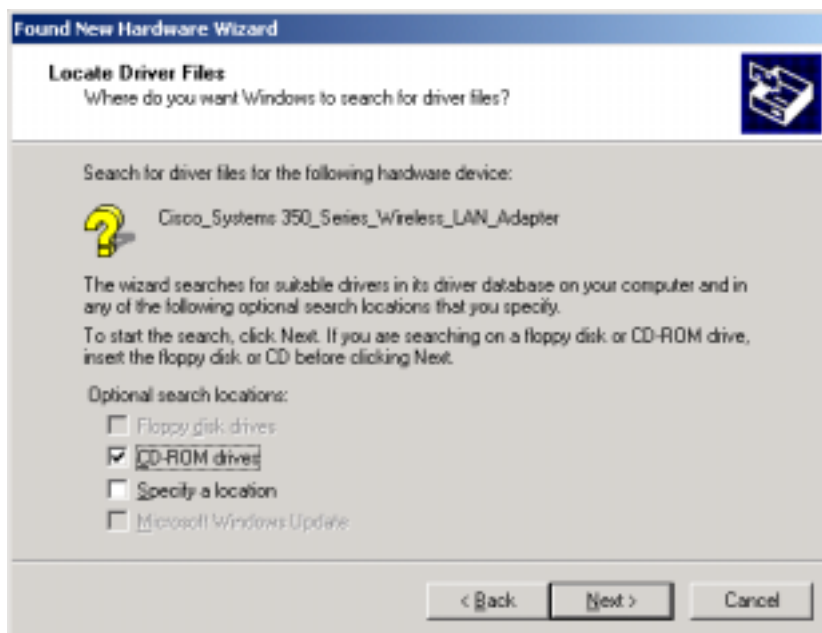
- c.) The **Found New Hardware Wizard** dialog box opens and indicates that the Wizard will help you to install the driver. Click **Next**.



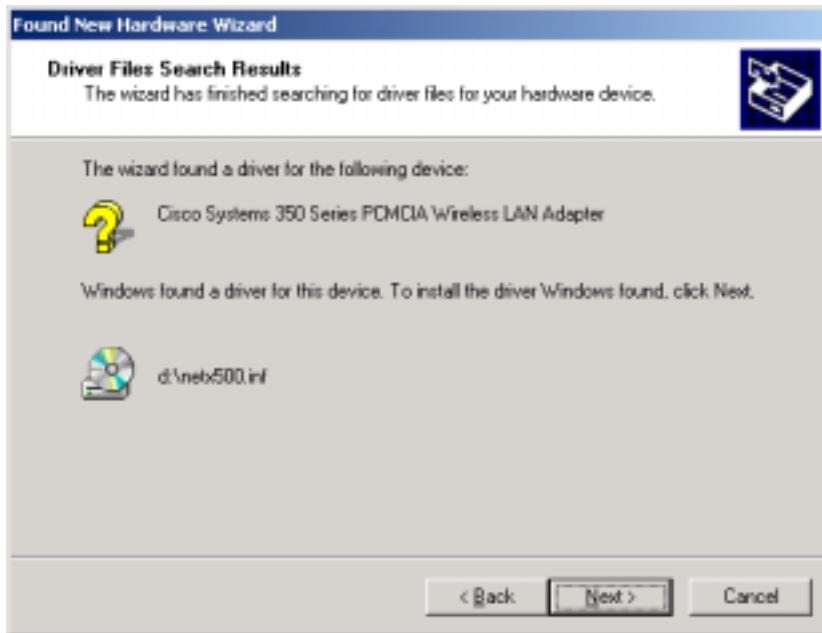
- d.) When the **Install Hardware Device Drivers** window comes up select **Search for a suitable driver for my device (recommended)** and click **Next**.



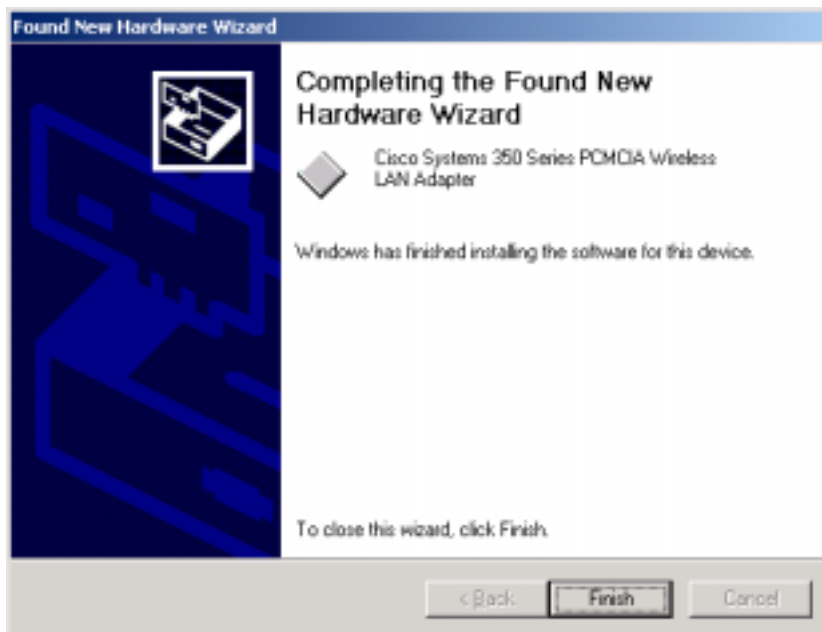
- e.) In the **Locate Driver Files** window, select **CD-ROM drives**, deselect all other options, insert the Cisco Aironet Series Wireless LAN Adapters CD into your computer's CD-ROM drive, and click **Next**.



f.) When the wizard indicates that it has found the driver on the CD and displays the search results, click **Next** to copy the necessary files and install the driver.



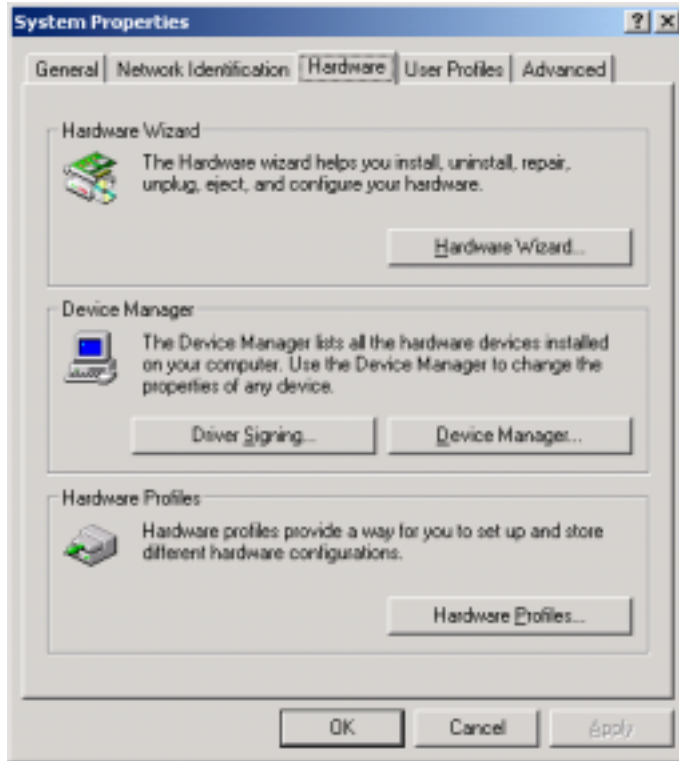
g.) When you receive a message indicating that Windows has finished the installation, click **Finish**.



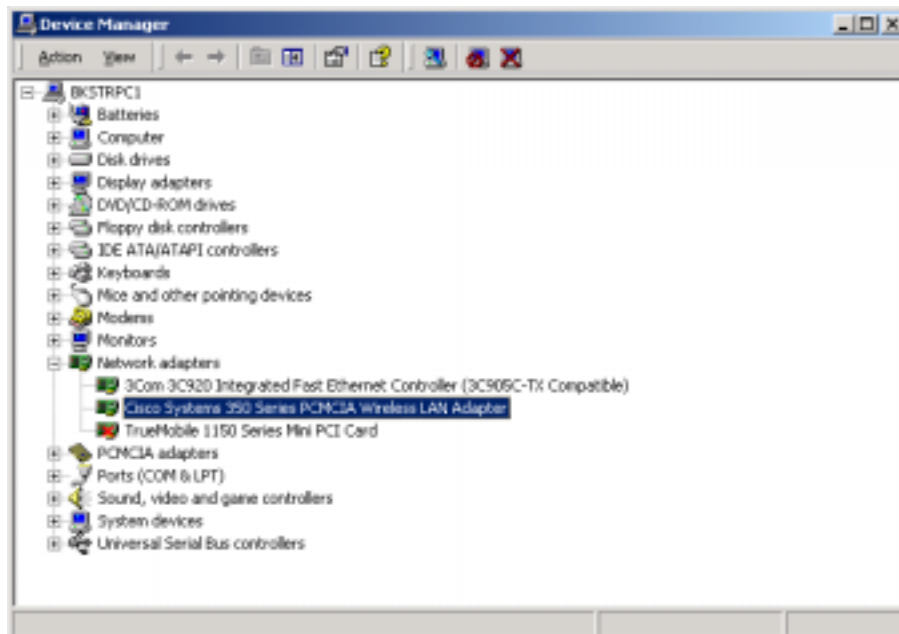
h.) Remove the CD from your computer's CD-ROM drive.

2. Configuring your client adapter

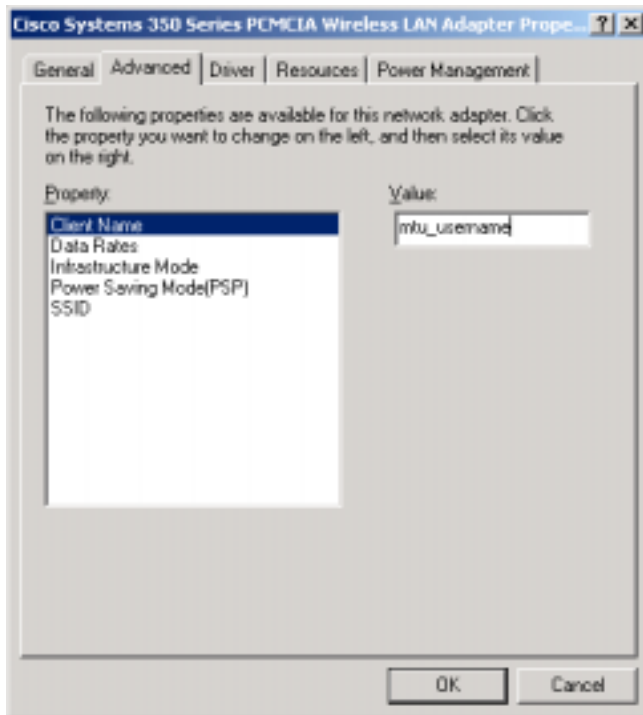
- a.) Double click **My Computer, Control Panel, and System**. In the **System Properties** window, click the **Hardware** tab.



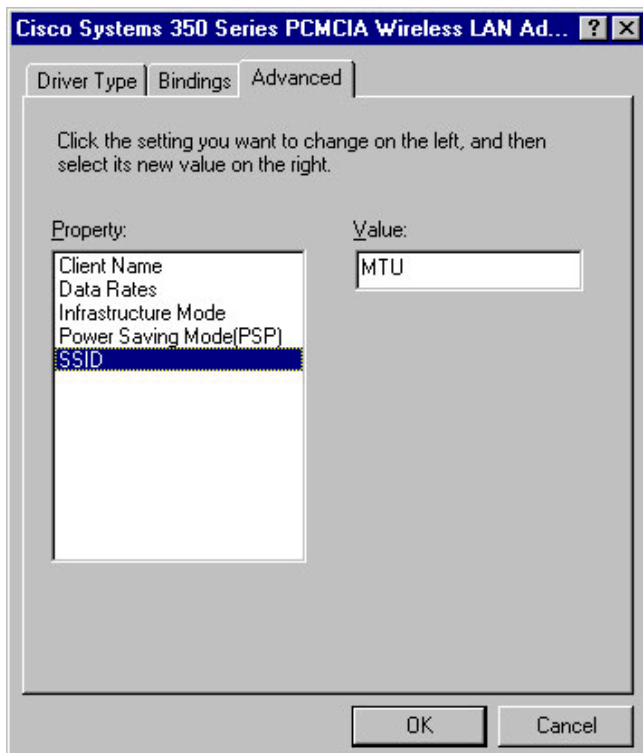
- b.) Click **Device Manager...**In the **Device Manager** window, double-click **Network Adapters**.



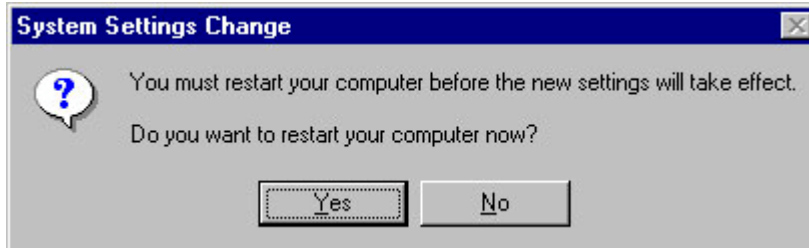
- c.) Right-click on the **Cisco Systems 350 Series PCMCIA Wireless LAN Adapter** and click **Properties**. In the client adapter Properties window, click the **Advanced** tab. Select **Client Name**. Type your MTU username in the Value dialog box.



- d.) Select **SSID**. Type **MTU** (case-sensitive) SSID in the Value dialog box. Click **OK**.



- e.) Back out of any open windows by clicking **OK**.
- f.) If you are prompted to restart your computer, click **Yes**.



Congratulations, the hardware installation is complete. Your Wireless Network PC Card is set up and ready for use.

3. Accessing RoverNet

- a.) Open any SSL capable browser and type any valid web address. The gateway will redirect you to login.



- b.) Enter your **Campus Username** (email address) and your **Campus Password** (if you do not know what your Campus Password is, you can obtain it by bringing your student ID card into the Tech Express Office, located in Rm. 100 of the Memorial Union Building). Press **Login**.



c.) If you have subscribed to this service a small window will appear to keep your connection open. **Keep this open to enable automatic renewal.** It is ok to minimize.



d.) You will then be redirected to the website you originally typed in.