



## WPC11 Wireless Card Install Guide

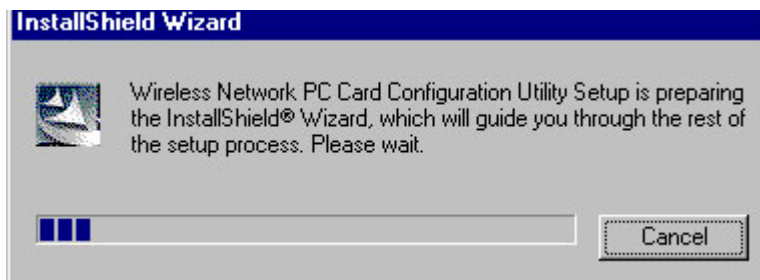
Ver. 1.0 for Microsoft Windows 95/98/ME and 2000

### 1. Installing the Drivers and Configuration Utility.

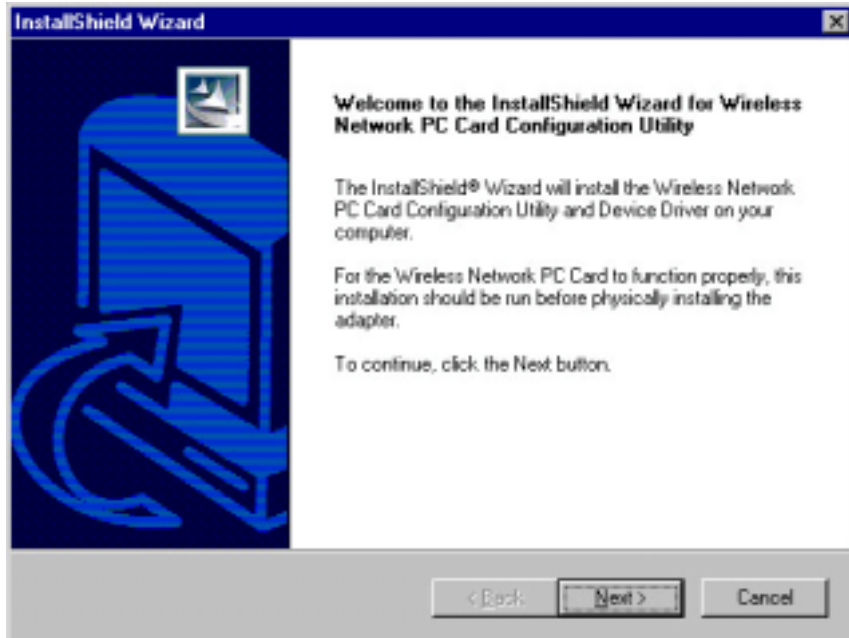
- a.) Before installing your card, insert the Setup Utility CD into your CD-ROM drive. The following screen should appear automatically. If this screen does not appear, you can access the installation by clicking **Start** and choosing **Run**. In the box type **D:\setup.exe** (where D: is the letter of your CD-ROM drive). You can also access the CD by double-clicking **My Computer** and double-clicking the CD-ROM drive icon where the Setup Utility CD is located. Double-click the **Setup.exe** icon in the folder that appears.



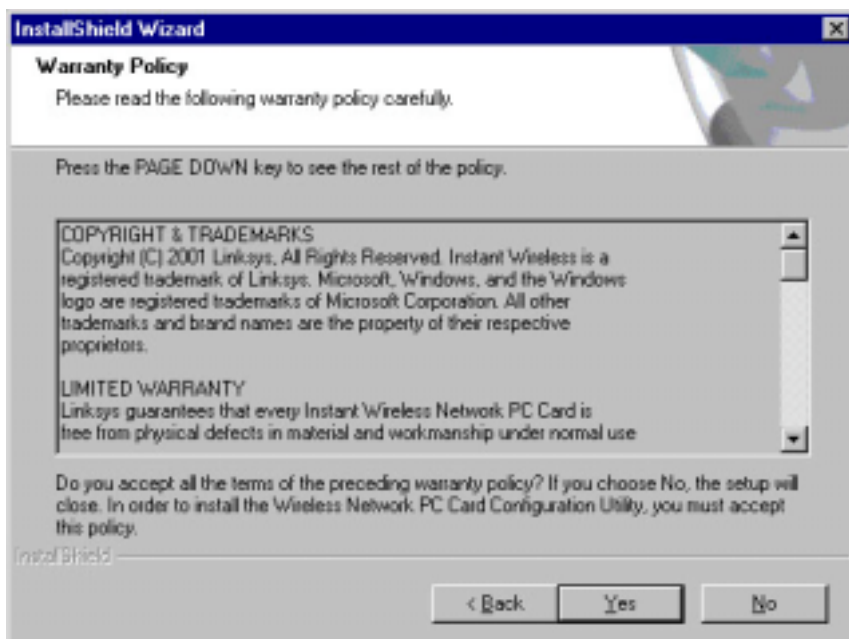
- b.) The first tab across the top of the screen, labeled **Install**, should be highlighted. Click **Install** and a screen should appear indicating that Windows is preparing the installation.



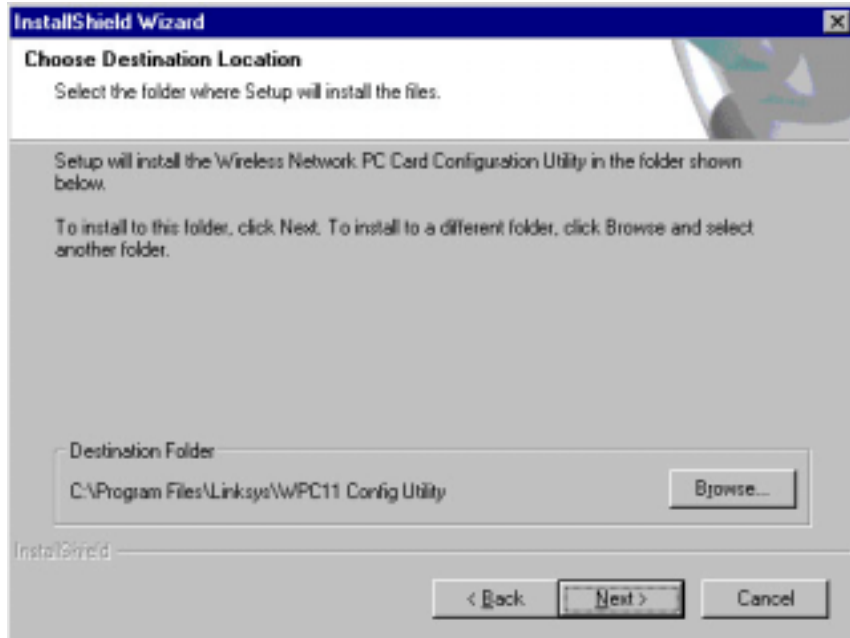
- c.) If for whatever reason, you need to abort or terminate the installation process, press **Cancel** at any time during the installation. Otherwise the installation will continue automatically.
- d.) The next screen will indicate that Windows is ready to continue the installation. Click **Next**.



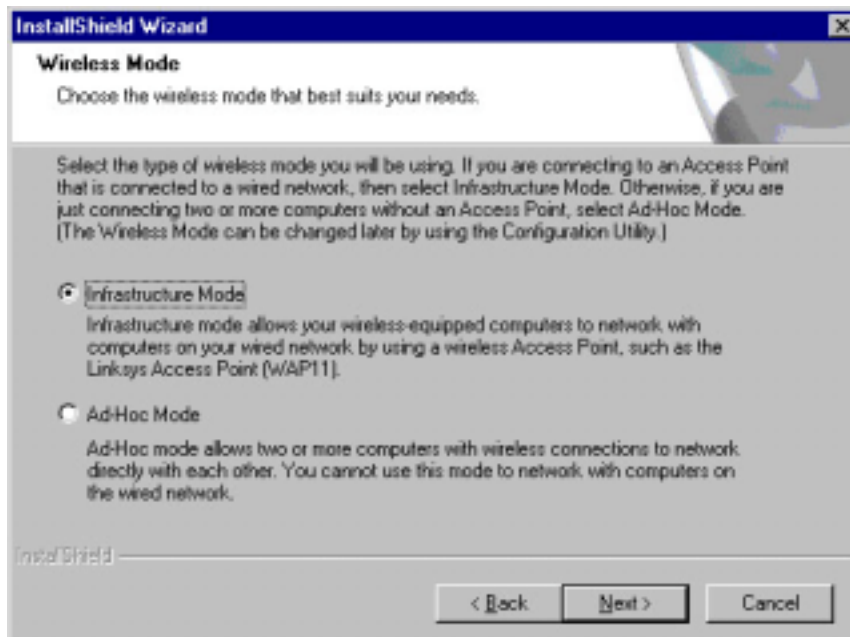
- e.) The next screen shows the **Warranty Policy**. Read the entire policy by pressing the **Page Down** button on your keyboard or by using the on-screen scroll bar. Click **Yes**.



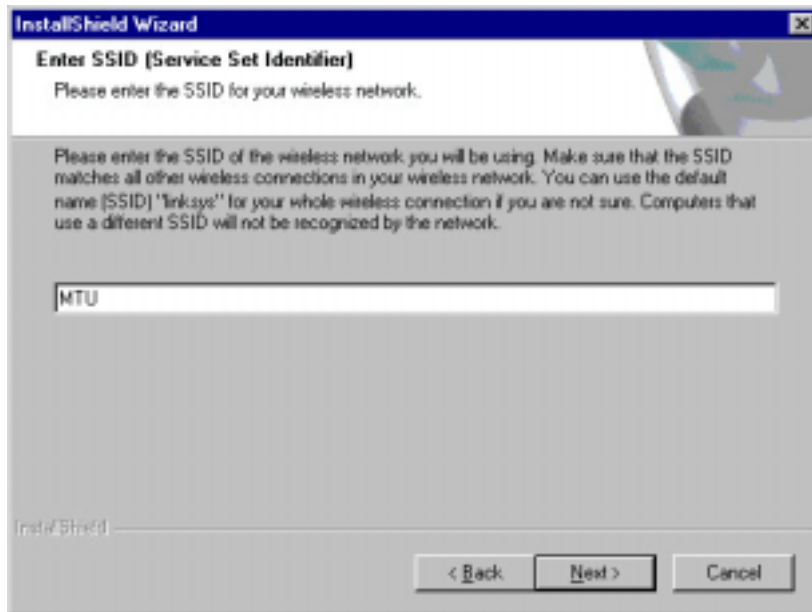
- f.) Next you will be requested to specify a folder into which the Configuration Utility will be installed. To install the Configuration Utility in the default directory (recommended), click **Next**. If you prefer to install the Utility in another directory, click **Browse**, and locate the preferred directory. Then, click **Next**.



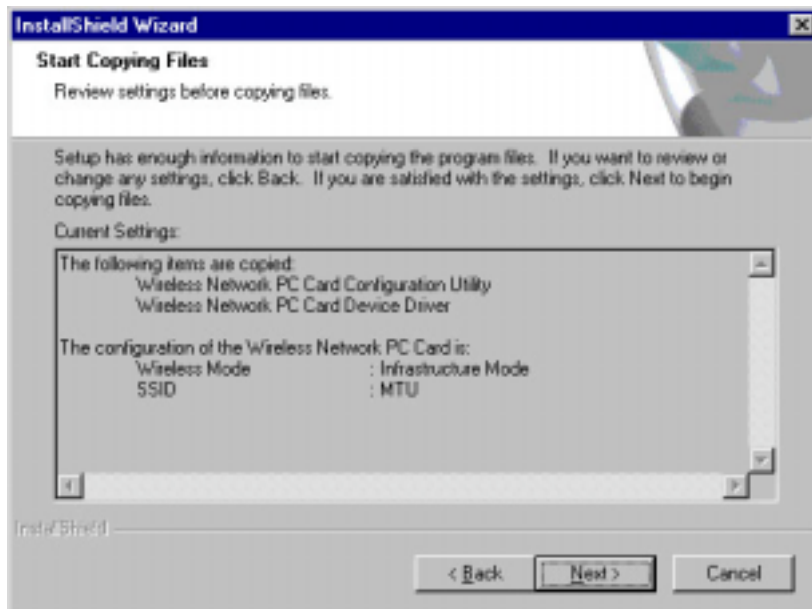
- g.) On the next screen, choose **Infrastructure Mode**, and click **Next**.



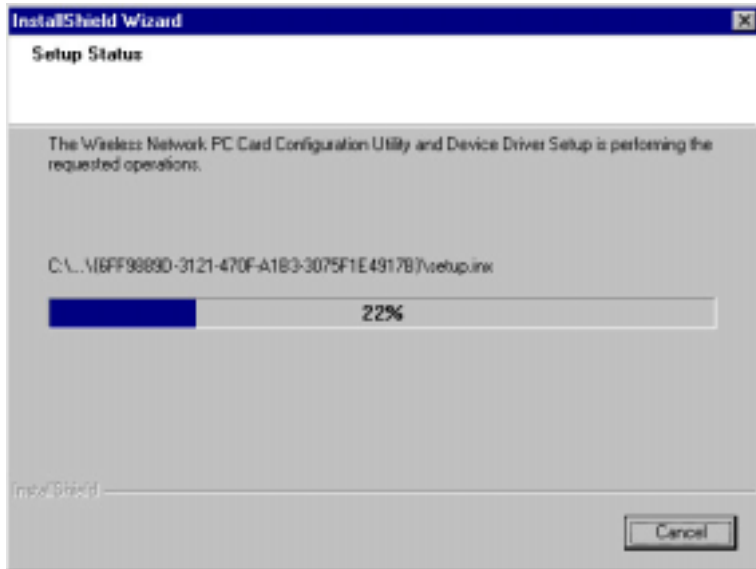
- h.) The following screen will appear next after you choose **Infrastructure** mode. You will be prompted to enter an **SSID** value in the box provided. Type **MTU** (all caps) in the space provided and click **Next**.



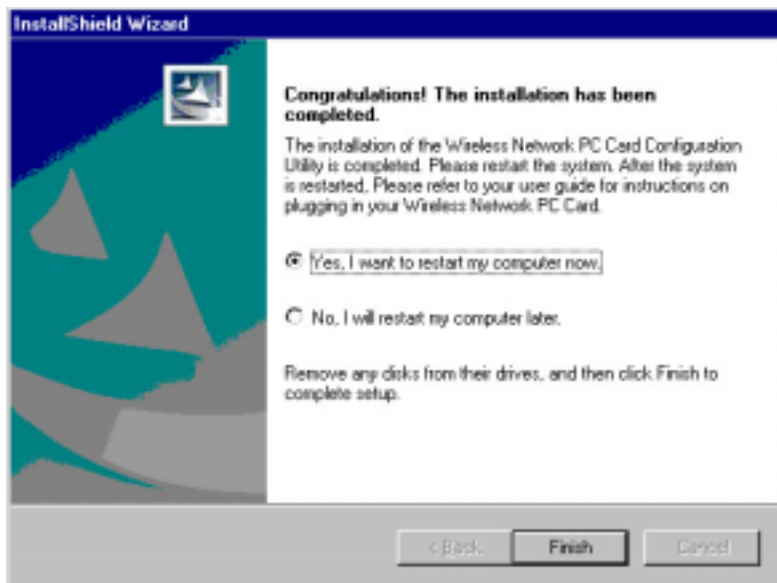
- i.) On the Review screen, click **Next** to continue.



- j.) The next screen will indicate that all of the appropriate files are being copied onto you drive. Click the **Cancel** button if you need to stop the installation for any reason.



- k.) Once Windows has finished copying the necessary files, the following screen will appear. In order for the drives to be installed properly, you must restart your computer. If you choose to do it now, select **Yes, I want to restart my computer now**. If you do not want to do it now, choose **No, I will restart my computer later**. Once you have made your choice, click **Finish** to continue. Proceed to Step 2 to continue with the installation.



## 2. Installing the Network PC Card.

- a.) Locate an available **Type II** or **Type III PCMCIA slot** on your notebook computer.
- b.) With the Network PC Card's 68-pin connector **facing** the open PCMCIA slot and the "Network PC Card" label facing up as shown in the following picture, slide the Network PC Card completely into the PCMCIA slot while the computer is restarting and before the Windows Desktop appears.



- c.) Note: you may see several screens appear as the driver installation is finalized. This is **normal**. No input should be necessary, and the screens should disappear automatically. Congratulations, the hardware installation is complete. Your Wireless Network PC Card is set up and ready for use.

## 3. Accessing RoverNet

- a.) Open any SSL capable browser and type any valid web address. The gateway will redirect you to login.



- b.) Enter your **Campus Username** (email address) and your **Campus Password** (if you do not know what your Campus Password is, you can obtain it by bringing your student ID card into the Tech Express Office, located in Rm. 100 of the Memorial Union Building). Press **Login**.



- c.) If you have subscribed to this service a small window will appear to keep your connection open. **Keep this open to enable automatic renewal.** It is ok to minimize.



- d.) You will then be redirected to the website you originally typed in.